

С. Ветушко,  
переложение Л.Тимощук

**ВАЛЬС ПАДАЮЩИХ ЛИСТЬЕВ**  
(для дуэта домр и фортепиано)

# Вальс падающих листьев

**Allegretto**

С. Вегушко,  
переложение. Л. Тимошук

1

Домра малая 1

Домра малая 2

Фортепиано

5

Д.м 1.

Д.м 2.

Ф-но.

rit.

9

2

Д.м 1.

Д.м 2.

Ф-но.

*f* *ff*

13

Д.м 1.

Д.м 2.

Ф-НО.

18

Д.м 1.

Д.м 2.

Ф-НО.

**3**

**f**

**f**

**3**

**f**

23

Д.м 1.

Д.м 2.

Ф-НО.

1.

2. rit..

1.

2. rit..

# Вальс падающих листьев

Домра малая 1

С. Вегушко,  
переложение Л. Тимощук

**1** Allegretto **rit.**

*mf*

9 **2**

*f* *ff*

13

18 **3**

*f* **rit.**

23 **1.** **2.**

Домра малая 2

# Вальс падающих листьев

С. Вегушко,  
переложение. Л. Тимощук  
**rit..**

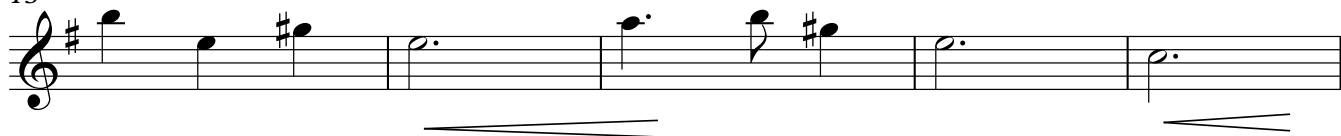
**1 Allegretto**



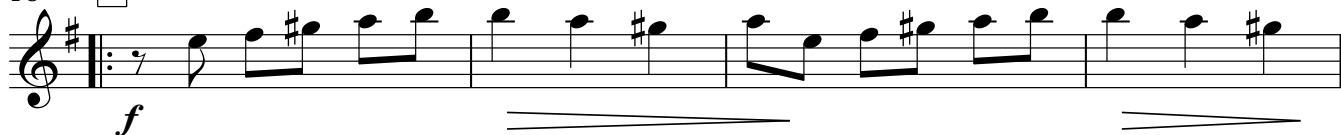
9 **2**



13



18 **3**



22



# Вальс падающих листьев

Фортепиано

С. Вегушко,  
переложение. Л. Тимошук  
**rit..**

**1** Allegretto

Musical notation for the first system, measures 1-8. The piece is in 3/4 time with a key signature of one sharp (F#). The first system consists of two staves: a treble clef staff and a bass clef staff. The treble staff begins with a whole rest, followed by chords and eighth-note patterns. The bass staff has a whole rest followed by a steady eighth-note accompaniment. Dynamics include a crescendo over measures 2-4 and a decrescendo over measures 5-7.

Musical notation for the second system, measures 9-12. The treble staff features a melody of eighth notes and chords, starting with a dynamic marking of *f* (forte) and reaching *ff* (fortissimo) by measure 11. The bass staff continues with a steady eighth-note accompaniment.

Musical notation for the third system, measures 13-17. The treble staff continues with eighth-note patterns and chords. The bass staff maintains the eighth-note accompaniment. Dynamics include a crescendo over measures 14-15 and a decrescendo over measures 16-17.

Musical notation for the fourth system, measures 18-22. The treble staff features a melody of eighth notes and chords, starting with a dynamic marking of *f*. The bass staff continues with a steady eighth-note accompaniment. Dynamics include a crescendo over measures 19-20 and a decrescendo over measures 21-22.

Musical notation for the fifth system, measures 23-26. The first ending (1.) covers measures 23-25, and the second ending (2.) covers measures 26. The second ending is marked *rit..* (ritardando). The treble staff features chords and eighth-note patterns, while the bass staff has a steady eighth-note accompaniment.